



INNOVATIVE PLASTICS

LEXANTM SHEET PORTFOLIO

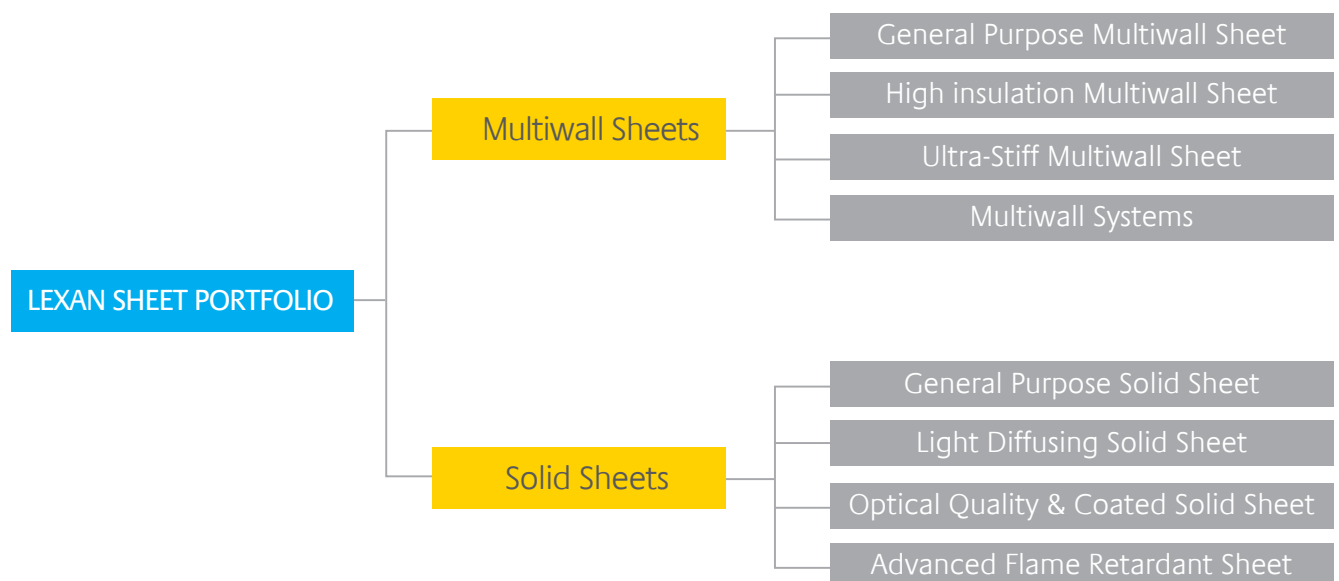
SPECIALTY FILM & SHEET, EUROPE



CHEMISTRY THAT MATTERSTM

SABIC'S SPECIALTY FILM & SHEET BUSINESS OFFERS HIGH QUALITY, ENGINEERED THERMOPLASTIC SOLID AND MULTIWALL SHEET PRODUCTS FOR USE IN A WIDE VARIETY OF INDUSTRIES

SABIC's Specialty Film and Sheet provides products for use across a wide variety of industries, ranging from building and construction, lamination and signs to transportation. Our LEXAN™ Polycarbonate sheet portfolio is backed by advanced technical support and application development services around the world, to meet our customers' global specification needs with local supply.



CONSTANTLY ADDING VALUE: PROVIDING MORE THAN JUST HIGH QUALITY PRODUCTS



SABIC's Specialty Film and Sheet business is a leading supplier of high performance engineering sheet products, serving customers around the world in a broad spectrum of applications. Our virtually unbreakable, lightweight, fire resistant sheet product portfolio includes a wide variety of structures, ranging from solid and multiwall to corrugated sheet. The company has integrated extrusion processes, surface texturing, and coating technologies to provide value added solutions across a wide variety of industries.

SABIC offers mono- and multi-layer extrusion capabilities and in-line master sheeting both in-house and through its distribution and converter partners. The company also offers cut-to-size and 3D forming services. SABIC's application development facilities provide lamination, cold- and hot line-bending, screen printing and architectural design services to customers.

At SABIC, we are dedicated to meeting our customers' ever changing needs with our high performance LEXAN™ sheet portfolio. Our material solutions and services help our customers to reduce their system costs and create innovative designs and environmentally responsible materials.

SABIC's ongoing investment in world-class technologies demonstrates our commitment to helping our customer's technical requirements, application development needs and business goals.

MULTIWALL SHEET

Our multiwall, polycarbonate LEXAN™ THERMOCLEAR™ sheet portfolio consists of various different structures. The products can provide an outstanding balance of light weight, high impact strength, and stiffness. Its light weight can make this product less expensive to transport and facilitates easy and fast installation. In addition, it provides excellent thermal insulation, UV- and flame resistance and long-term light transmission. LEXAN THERMOCLEAR sheet is available in clear, opal white, solar control and with a variety of specialty finishes, such as the Easy Clean or Dripgard™ coatings, to allow sheets to be easily cleaned or prevent the formation of condensation. For availability of other colors, please contact SABIC.





GENERAL PURPOSE GRADES

SABIC has one of the broadest portfolios of general purpose multiwall sheets available in two and three wall structures. These products are available in various gauges, weights and a wide color range.

POTENTIAL APPLICATIONS:

- Commercial, residential and stadium roof glazing
- Carports
- Greenhouses
- Swimming pool covers
- Industrial roofing, roof-lights
- Signage

KEY BENEFITS:

- Light weight and high stiffness
- High impact strength
- Long-term light transmission
- Ease of installation
- Excellent thermal insulation and flame resistance
- Two side UV resistance, avoiding installation errors and improving cutting yields
- Broad portfolio of structures, coatings and colors
- Custom widths with closed edges



HIGH STIFFNESS GRADES

LEXAN™ Ultra-Stiff THERMOCLEAR™ sheet offers exceptional performance with capability to withstand wind and snow loading pressures of up to 7000 N/m². This exceptionally stiff sheet resists high wind and snow loads without the risk of cracking or breakage.

POTENTIAL APPLICATIONS:

- Stadium roofing
- Railway station roofing
- Shopping centers
- Other large architectural projects

KEY BENEFITS:

- High stiffness allowing for high wind and snow loads
- Light weight
- Available in solar control versions
- Excellent resistance against UV weathering
- High resistance against hail damage





HIGH INSULATION GRADES

The drive to reduce energy consumption to cut costs is one of the highest priorities in building and construction today. SABIC's high insulation LEXAN™ polycarbonate (PC) sheet products offer many ways to increase energy efficiency. The multi-wall structure of LEXAN THERMOCLEAR™ sheet offers significant advantages when thermal insulation is a major consideration. The hollow form provides excellent insulation to avoid heat escape during wintertime and by using the solar control version, heat buildup during summertime can be restricted.

POTENTIAL APPLICATIONS:



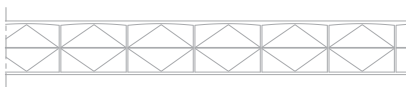
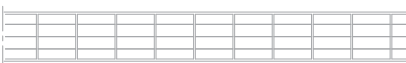

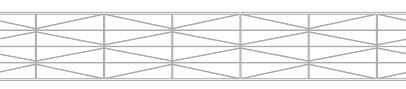
- Verandas
- Office buildings
- Shopping centers
- Architectural projects

KEY BENEFITS:

- High thermal insulation
- Solar control version available
- Despite high thickness, low weight per m²
- 2 sides UV protection



PRODUCT OVERVIEW (SELECTED GRADES)

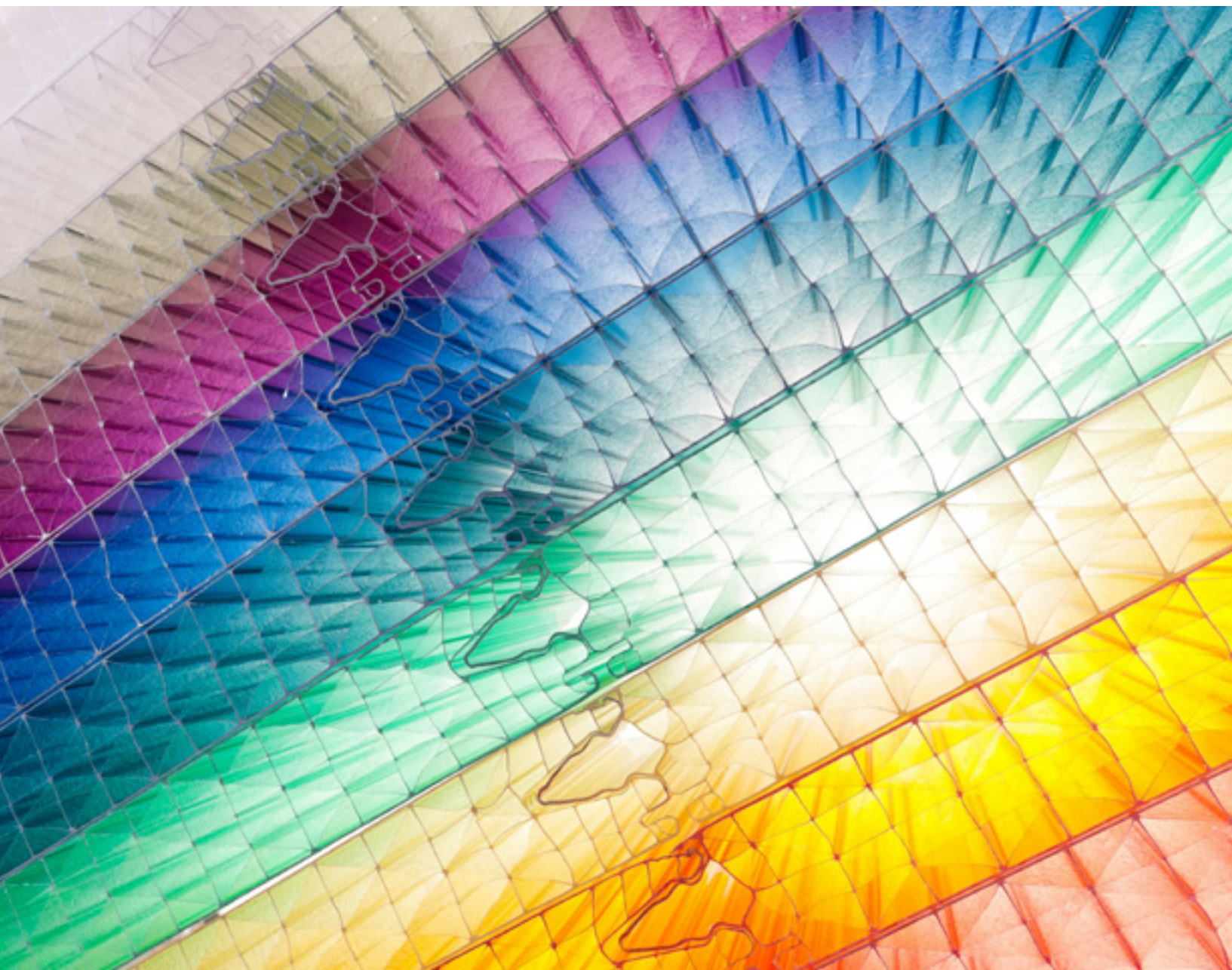
Structure Name	Structure	Gauge (mm)	Weights (kg/m²)	U-Value
General Purpose				
2-wall		4.5	1.0	3.86
		6	1.3	3.56
		8	1.5	3.26
		10	1.7	3.02
3-wall		16	2.7	2.27
Ultra stiff				
3-wall X-structure		16	2.8	2.1
		25	5.0	TBD
High Insulation				
5-wall		10	1.75	2.39
5-wall X-structure		32	3.8	1.32
		25	3.4	1.51
		16	2.7	1.88
9-wall X-structure		16	1.5	1.77
		20	2.8	1.59
		25	3.0	1.40

Surface Treatment: LEXAN THERMOCLEAR sheets are standard supplied with a UV protective layer on both sides, with a 10 year limited warranty. Upon request, special surface treatments can be offered. "Easyclean" grade can offer improved cleaning, "Dripgard" grade may avoid formation of condensation droplets and "SUNXP™" can be applied for even longer lasting UV resistance. Note: not all surface treatments are available for each product

Colors: LEXAN THERMOCLEAR sheets are available in a wide range of colors including special Solar Control versions.

BUILDING SYSTEMS

The multiwall LEXAN™ sheet and building systems provide creative glazing solutions for industrial roofing and facades. Characterized by outstanding high impact resistance and excellent mechanical properties, each product in the portfolio is designed to provide added value performance through potentially low system costs and consistent high quality. Installation costs may be kept low as each product is designed using custom-made configurations for fast on-site assembly.



POTENTIAL APPLICATIONS:





- Facades
- Industrial roofing
- Roofing for offices and shopping centers

KEY BENEFITS:

- Smart connection systems reducing need for complex aluminum profiles
- Tailor-made low cost corrugated panels for easy connection with aluminum sandwich panels
- Seamless facade designs
- Excellent water tightness
- Light weight and cost efficient
- Creates high quality diffused light
- Easy and fast installation
- Excellent resistance to UV aging
- Custom colors available

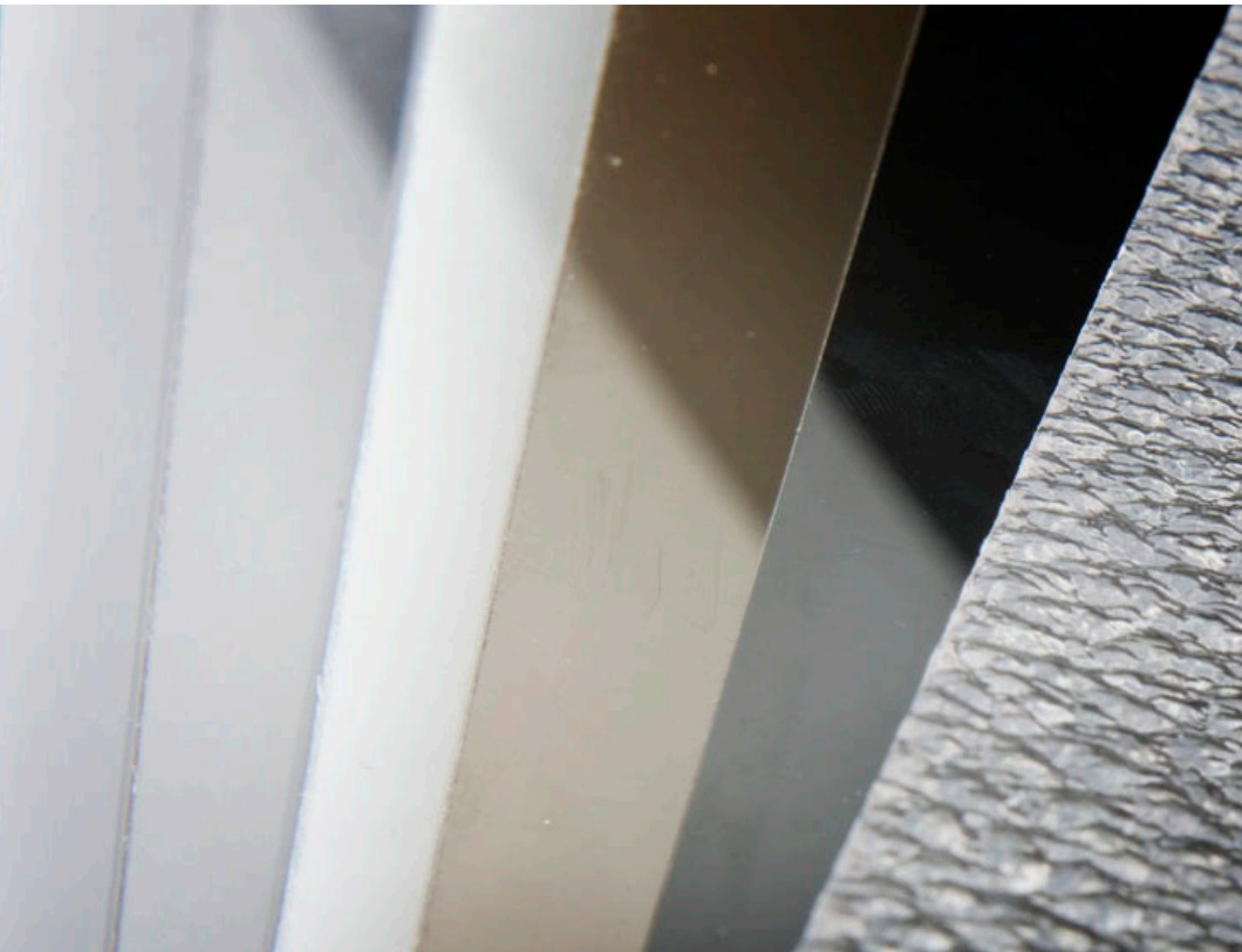


PRODUCT OVERVIEW

Structure Name	Structure	Description / Key Features	Width (mm)	Weights (kg/m ²)
LEXAN™ THERMOCLICK™ sheet 40mm		<ul style="list-style-type: none"> - Facade panel with integrated connection - 40mm thickness for high insulation - X-structure for high stiffness - High insulation U-value of 1.27 	500	4.0
LEXAN THERMOCLICK sheet 50mm		<ul style="list-style-type: none"> - Facade panel with integrated connection - 50mm thickness for ultra-high insulation - High insulation U-value of 1.0 - X-structure for high stiffness 	1.000	5.15
LEXAN THERMOPANEL™ sheet		<ul style="list-style-type: none"> - Panel for industrial roofing applications - Multiple wing designs for optimal connection to metal sandwich panels 	945 1.000	3.6
LEXAPANEL™ Standing Seam		<ul style="list-style-type: none"> - Standing seam panel for roofing and facades - Patented concept providing flexible widths while maximizing design freedom 	Flexible width	2-3.5

SOLID SHEETS

Based on high-performance polycarbonate LEXAN™ resin, SABIC's portfolio of solid sheet products helps customers develop lightweight, durable parts with tailor-made performance across a wide variety of industries. This virtually unbreakable, transparent or opal white color LEXAN polycarbonate sheet comes with UV protection on one or both sides and provides remarkable clarity - even after many years of intense sunlight and weather extremes.

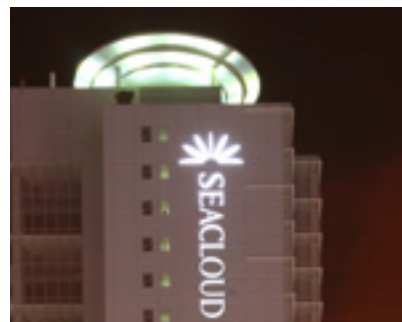


POTENTIAL APPLICATIONS:

- Machine guards
- Roof and facade glazing
- Signage & LED light covers
- Sound walls
- Carports
- Transportation
- Electrical and electronics applications

KEY BENEFITS:

- High impact resistance
- Excellent light transmission
- High heat resistance
- Wide color range availability
- UV- and weathering resistance
- Light weight
- Large sheet sizes
- Grades with increased flame retardance

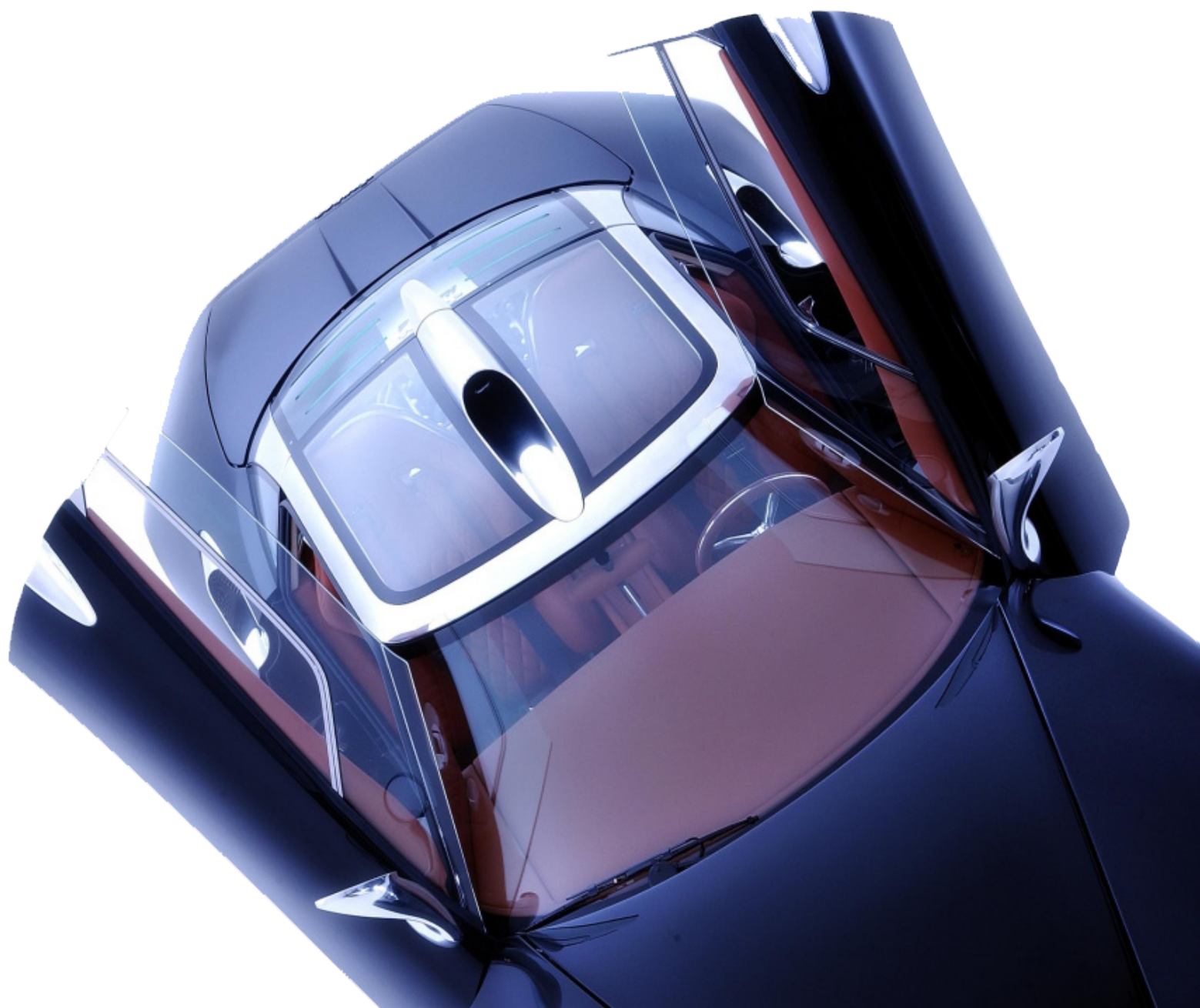


PRODUCT OVERVIEW

Product	Description / Key Features	Gauges (mm)
General Purpose		
LEXAN™ 9030 sheet	- General purpose polycarbonate sheet	2-15
LEXAN 9030TG sheet	- General purpose polycarbonate sheet in thin gauges	0.75-1.5
LEXAN EXELL™ D sheet	- General purpose sheet for outdoor applications - UV resistant cap-layer on both sides	2-12
LEXAN EXELL DST sheet	- UV resistant cap-layer on both sides - Rough texture on one side for light diffusion - Also available in corrugated versions	2-6
LEXAN SG305 sheet	- Diffusing opal white color and matte texture on one side - UV resistant cap-layer on both sides	2-8
LED Lighting & Sign		
LEXAN EXELL D OB sheet	- Opal white translucent sheet - Excellent balance on light transmission and hiding power - UV resistant cap-layer on both sides	2-12
LEXAN SG305-OB sheet	- Polycarbonate sheet with optical LED hiding power - Diffusing opal white color and matte texture on one side - UV resistant cap-layer on both sides	2-8

OPTICAL QUALITY & COATED SHEET

Virtually unbreakable, high optical quality LEXAN™ polycarbonate (PC) sheet materials from SABIC combine crystal clear transparency with value-added performance that is lightweight, features outstanding low ripple and distortion, and has an extremely low number of optical defects. These optical quality and coated sheets are supplied with industrial leading optical specifications.



OPTICAL QUALITY SHEET

Produced with class 10,000 clean room technology, LEXAN™ OQ sheet can offer one of the best optical quality materials for the glazing of forestry vehicles, high speed trains, high security facilities and bullet resistant glass-PC laminates for VIP, military and police vehicles. While providing easy maintenance, these lightweight, shatter proof products also offer excellent vision, long-term appearance, abrasion- and chemical-resistance.

POTENTIAL APPLICATIONS:

- Base sheet for 3D vehicle glazing
- Base sheet for coated sheet
- Layers in (ballistic) safety laminates
- Visors & goggles

KEY BENEFITS:

- Low distortion level
- Minimal number of point defects
- Available in custom colors
- Suitable for lamination with glass by PU interlayers
- High impact & excellent transparency
- Light weight (-50% vs. glass)



COATED SHEET

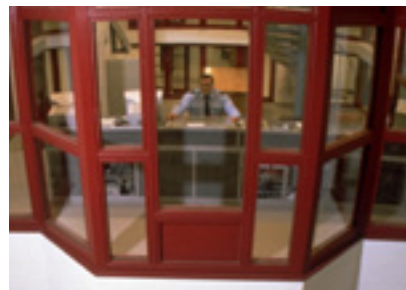
LEXAN™ MARGARD™ sheet offers optical clarity in combination with a unique abrasion and UV resistance, which can make it an excellent candidate for safety and security glazing to suit a wide range of applications. Available clear or bronze tinted, it can be used for both flat and curved glazing. Unique coatings offer high abrasion resistance, anti-fog behavior and increased resistance to UV weathering. Some product grades can be formed into (moderate) 3D shapes.

POTENTIAL APPLICATIONS:

- Specialty vehicle glazing
- Police vehicle glazing
- Motorcycle windshields
- Layers in (ballistic) safety laminate
- Appliance facias
- Train glazing
- Protective glazing
- Sound-walls
- Visors & goggles
- Machine guards

KEY BENEFITS:

- Abrasion resistance
- Resistance to UV weathering
- Available in custom colors
- Enhanced chemical resistance
- Formability for select coatings
- Optional anti-fogging





		OQ ¹	TABER HAZE ²	WEATHER- ABILITY ³	FORM- ABILITY ⁴	UL LISTING	GAUGES (MM)
CURVED APPLICATIONS							
UNCOATED LEXAN™ SHEET GRADES							
ULG1003	Very high optical quality, thermoformable sheet with very low distortion level for coating or lamination applications.	Very high	> 15	1	50	N/A	2-15
ULG1000	High optical quality, thermoformable sheet for coating or lamination applications. Specially designed for automotive side glazing applications.	High	> 15	1	50	N/A	2-15
1-SIDE COATED LEXAN SHEET GRADES							
MAR-RESISTANT							
HLGA2	For interior and non-UV intense glass/pc lamination applications. Improved secondary operations (crack sensitivity) combined with excellent abrasion resistance.	Very high	0.5 - 1	1	0.3	N/A	1 - 8
FLG5XT	Formable (cold/warm) hard coated sheet for glass/PC lamination applications.	High	4 - 8	5	5	N/A	2 - 8
ANTI-FOG							
CTGAF1	Formable 1 side anti-fog coated sheet with abrasion resistance for visor applications.	High	15 - 20	1	5	N/A	0.75 - 5
2-SIDE COATED LEXAN SHEET GRADES							
MAR-RESISTANT							
FMR5XT	Formable (cold/warm) coated sheet for non-UV intense formed applications.	High	4 - 8	5	5	N/A	2 - 12
CTGXT	Formable coated thin gauge sheet for formed applications requiring abrasion resistance on both sides	High	4 - 8	5	5	N/A	0.75 - 2
ANTI-FOG							
CTGXTAF	Formable coated sheet with weathering & abrasion resistance on one side and anti-fog & abrasion resistance on the other side	High	4 - 8	5	5	N/A	0.75 - 5
CTGAF2	Formable 2 sides anti-fog coated sheet & abrasion resistance for visor applications	High	15 - 20	1	5	N/A	0.75 - 5
FLAT APPLICATIONS							
1-SIDE COATED LEXAN SHEET GRADES							
MAR-RESISTANT							
HLG5	Good abrasion resistance, highly weatherable sheet for flat, outdoor glass/pc lamination applications.	Very high	1 - 3	7	0	HB/>3	2 - 12
MRX1	1 side hard coated, weatherable sheet for various flat applications.	High	2 - 4	5	0	N/A	2 - 15
2-SIDE COATED LEXAN SHEET GRADES							
MAR-RESISTANT							
MR5E	Abrasion resistant, weatherable sheet with enhanced chemical resistance & anti-graffiti properties (ECE R43 certified) for use in public areas for high abuse applications in flat applications.	Very high	1 - 3	7	0	HB	2 - 15
MRX	Sheet with wider optical specifications, providing good balance of weatherability, abrasion resistance and costs for flat applications.	High	2 - 4	5	0	N/A	2 - 15
FLAME RETARDANT APPLICATIONS							
1-SIDE COATED LEXAN SHEET GRADES							
MAR-RESISTANT							
HLG5FR	Flame retardant, 1 side hard coated weatherable sheet for flat glass/pc lamination.	Std	1 - 3	7	0	N/A	3 - 5*
HLG5FRA	Flame retardant (according to FST), 1 side hard coated weatherable sheet for flat glass/pc lamination, especially for aircraft.	Std	1 - 3	7	0	FST	2 - 3
MRX1FR	Flame retardant, high optical quality, 1 side hard coated weatherable for various flat applications	Std	2 - 4	5	0	N/A	3 - 6*
2-SIDE COATED LEXAN SHEET GRADES							
MAR-RESISTANT							
MR5FR	Flame retardant, 2 side hard coated weatherable sheet for flat glass/pc lamination.	Std	1 - 3	7	0	VO/3-6 5VB/>6	3 - 9.5
MRXFR	Flame retardant, high optical quality, 2 sides hard coated weatherable sheet for various flat applications	Std	2 - 4	5	0	N/A	3 - 6*

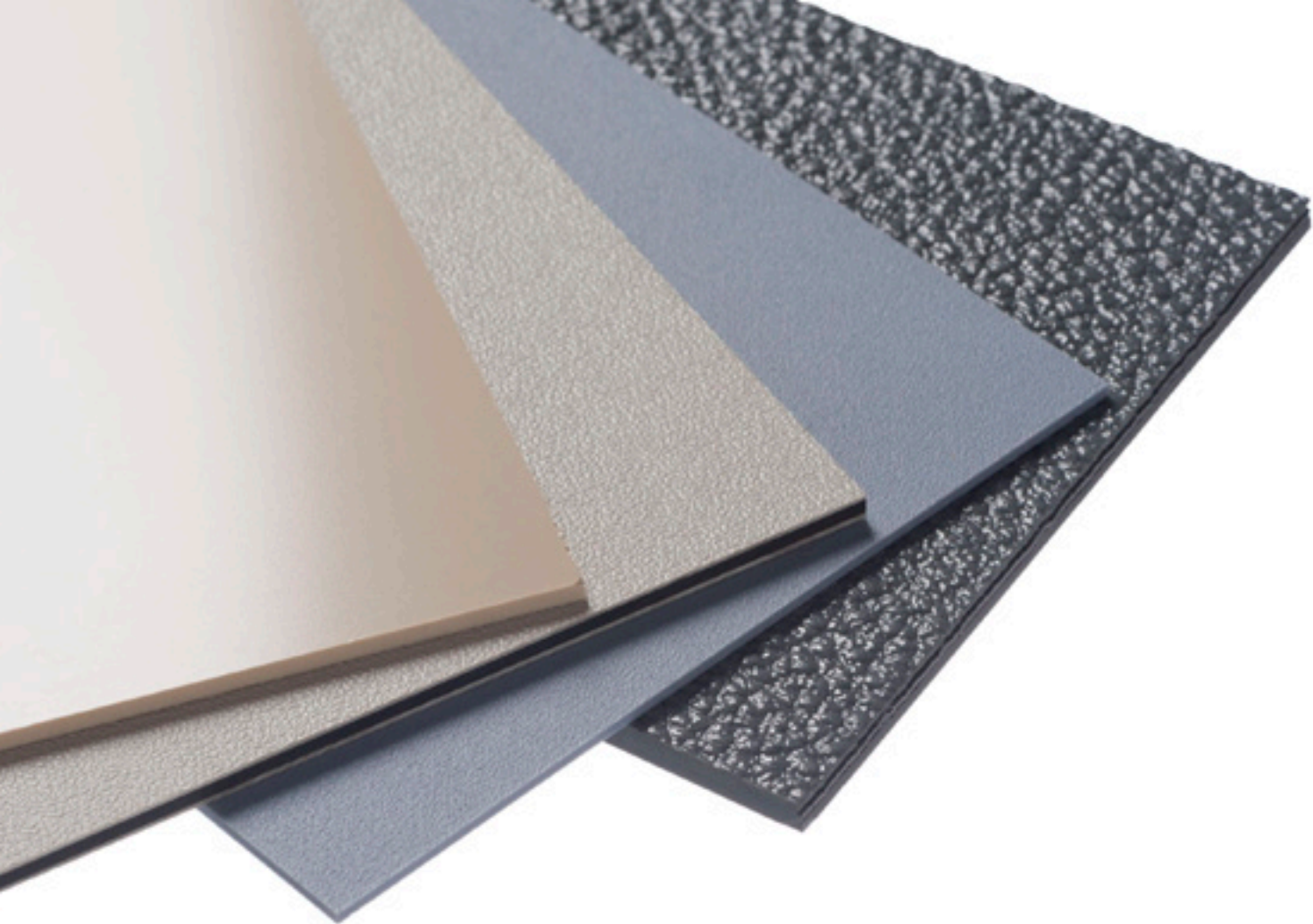
* Other gauges on request

1. OQ - Optical Quality: See page 13 for classifications

2. Taber Haze according ASTM D1044, CS-10F 100 cycles 500gr.

3. Weatherability according to ISO 11431A test, 800 hours - 1 year in central Europe (years of warranty)

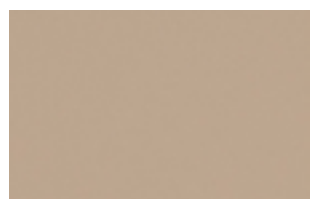
4. Formability (maximum thinning in %)



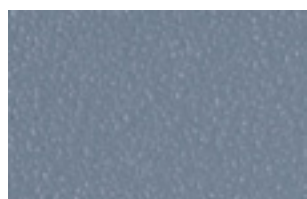
ADVANCED FLAME RETARDANT SHEET

SABIC offers a range of products for aircraft- and railway-interior applications ranging from seating to wall cladding and lighting. SABIC's opaque and translucent material portfolio not only offers lightweight and high impact resistant materials but also helps aircraft and railway interior manufacturers to meet tough flame, smoke, toxicity and heat release regulations, reduce overall system costs and enhance the aesthetics, safety and comfort of the cabin environment.

SURFACE TEXTURES



5 TEXTURE
Matte texture for low gloss surfaces



6 TEXTURE
Rougher texture for better texture retention after forming and matte surface



11N TEXTURE
Haircell texture for maximum abrasion resistance



18 TEXTURE
Very rough random texture

POTENTIAL APPLICATIONS:

- Seating
- Wall/ceiling cladding
- Galley applications
- Light diffusers
- Electrical cabinets
- Medical device housings
- Wall cladding applications for high level of sanitation

KEY BENEFITS:

- Compliance with key industry requirements
 - Flame resistance
 - Low smoke density
 - Low toxicity
 - Heat release
- Abrasion resistance by surface texture
- Impact resistance
- Dimensional stability
- Thermoformable

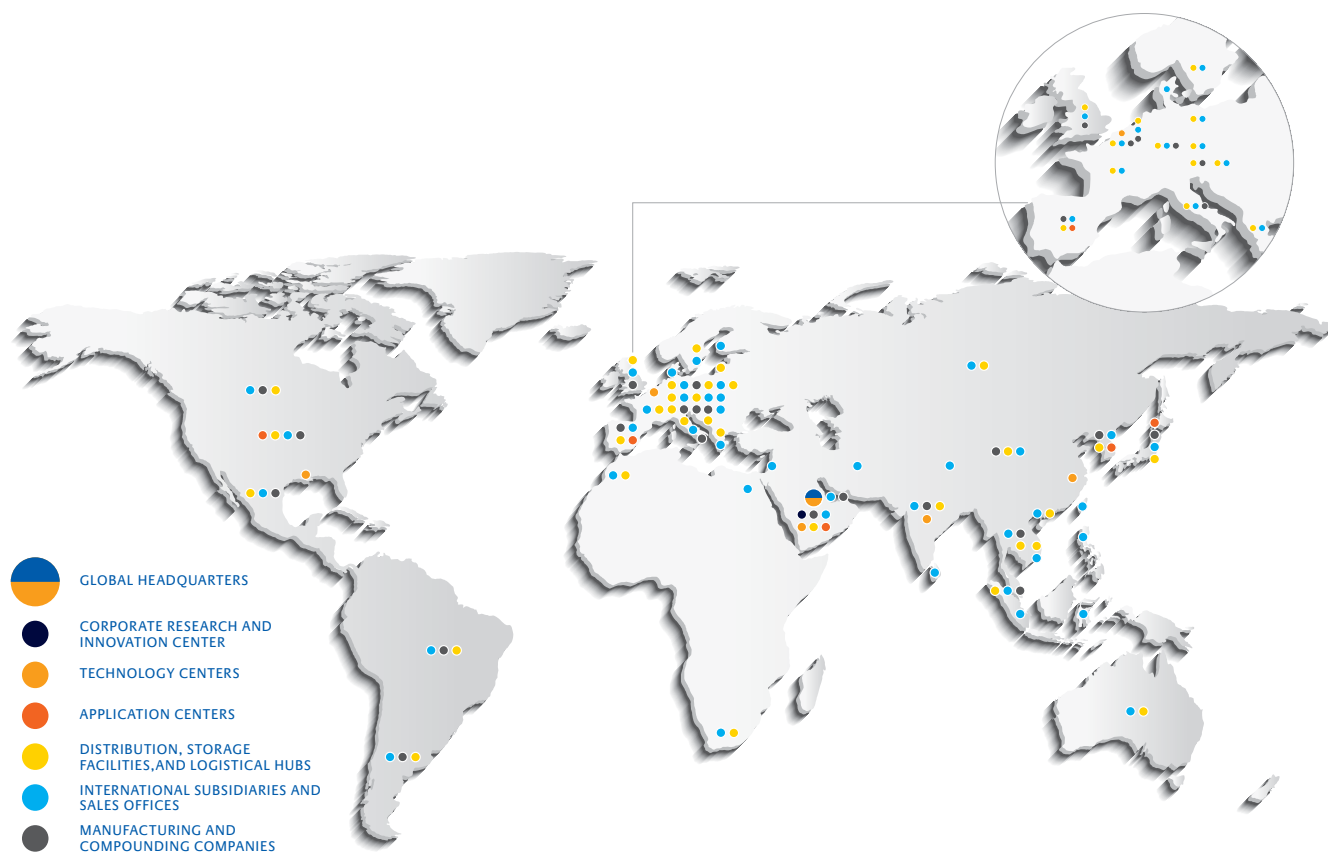


PRODUCT OVERVIEW

Product	Description	Key Features/Certifications*	Texture Type (abrasion)	Gauges (mm)
LEXAN™ F2000 sheet	Clear/translucent FR sheet	Pass German DIN 5510 S4 SR2 ST2 norms at 3mm French NF F 16-101 M2, F2 rating at 2 - 8 mm Compliant with CEN/TS 45545 norm R4 for lighting	polished	1.5-9.5
LEXAN F2000A sheet	Clear/translucent FR sheet	Compliant with FAR25853 & ABD0031 requirements at 2mm and 3mm. Environmentally responsible flame retardancy according to DIN/VDE 0472 part 815	polished	2-6
LEXAN F2500 sheet	Clear FR sheet	Pass Flame/Smoke/Toxicity for FAR ABD aviation requirements. ECO responsible flame retardancy according to DIN-VDE norm meeting UL94 V0 at 2mm	polished	2-6
LEXAN F6000 sheet	Opaque FR sheet	Compliant with FAR25853 and ABD-0031 regulations. Pass NF16.101 –M2, DIN5510 - S4 SR1 ST2 at 1.5mm	5/6/11N	3-6
LEXAN H6000 sheet	Opaque FR sheet	Pass Polish norms for side wall and ceiling applications (PN-K-02512, PN-L-02501, PN-K-02505), French NF F 16-101 M1, F2 rating at 2mm and German DIN 5510 Part 2 S4-SR2-ST2 norms at 3mm and UL94 V0 at 1.5mm. ECO responsible flame retardancy according to DIN-VDE 0472 part 815 norm	6/11N	3-6
LEXAN H6500 sheet	Opaque, low gloss FR sheet	Pass CEN/TS 45545 R6 (seating), French NF 16-101 M1F1 norm at 2-4 mm.	6/11N	3-6
LEXAN H6200 sheet	Opaque FR sheet	Compliant with German DIN 5510 norm: S3 SR2 ST2 at 3 mm and S4 SR2 ST2 at 4 mm	6/11N	3-6
LEXAN H6300 sheet	Opaque FR sheet	Pass India railway requirements for seating and cladding	11N	3.6
LEXAN XHR6000 sheet	Opaque FR sheet	Compliant with FAR25853 and ABD-0031 regulations. Pass NF16.101 –M2, DIN5510 - S4 SR1 ST2 at 1.5mm	6/11N/29	1-3
LEXAN CLINIWALL B6200 SHEET	Opaque FR sheet, anti-bacterial	Pass European norm EN13501-1 - B,s1,d0 (1.7mm)	—	1-1.5-1.7
LEXAN CLINIWALL AB6200 SHEET	Opaque FR sheet	Pass European norm EN13501-1 - B,s1,d0 (1.7mm)	—	1.7
LEXAN KH6200 SHEET	Opaque FR sheet	Passes Fire Norm: Germany DIN 5510-2 - S4/SR2/ST2 (3-5 mm)	5/6	3-5
LEXAN KH6500 SHEET	Opaque FR sheet	Passes Fire Norms: Germany DIN 5510 Pass 3-5mm and US NFPA 130 Pass 3-4mm	6	3-5

*Please contact your representative for up to date certification overview

GLOBAL COMPANY WITH LOCAL SERVICES & SUPPLY



SABIC IS COMMITTED TO ITS CUSTOMERS AROUND THE WORLD WITH A PORTFOLIO OF SPECIALTY FILM & SHEET MATERIALS, APPLICATION SUPPORT AND WORLDWIDE SERVICES.

Specialty Film & Sheet business operates a worldwide network of sales, distribution, research, manufacturing and technical service facilities. With twelve ISO certified manufacturing sites across the USA, Canada, the Netherlands, Italy, Austria, China, Malaysia, India and Brazil, the company serves customers around the world in a broad spectrum of industries and applications. As a business unit of SABIC, Specialty Film & Sheet benefits from global cross-business resources and expertise. From its network of technical centers the

company provides a variety of services. These include hands-on engineering and technical support that extends from selecting the right material to characterization of mechanical, thermal, UV/heat aging data, advanced light measurements and optical modeling to part design and installation guidelines. The company also offers a local team, complete supply chain, and distribution organization to ensure a reliable source of materials to its customers wherever their manufacturing site is located.

SABIC ranks among the world's top petrochemical companies, and is a global market leader in the production of polyethylene, polypropylene, advanced thermoplastics, glycols, methanol and fertilizers. SABIC operates in more than 45 countries across the world with 40,000 employees worldwide. It has significant research resources with 18 dedicated technology and innovation facilities in Saudi Arabia, the USA, the Netherlands, Spain, India and China.



CONTACT US

Middle East and Africa

Global Headquarters
PO Box 5101
Riyadh 11422
Saudi Arabia
T +966 (0) 1 225 8000
F +966 (0) 1 225 9000
E info@sabic.com

Americas

Specialty Film & Sheet
1 Plastics Avenue
Pittsfield, MA 01201
USA
1 800 323 3783
T 1 413 448 6655
F (888) 443 2033
E Spinside.sales@sabic-ip.com

Europe

Specialty Film & Sheet
Plasticslaan 1, 4612 PX
Bergen op Zoom
The Netherlands
T +31 (0)164 293678
F +31 (0)164 293272
E sfs.info@sabic-ip.com

Asia Pacific

Specialty Film & Sheet
2550 Xiupu Road, Pudong
201319 Shanghai
China
T +86 21 3222 4500
F +86 21 6289 8998
E sfs.info@sabic-ip.com



DISCLAIMER: THE MATERIALS, PRODUCTS AND SERVICES OF SAUDI BASIC INDUSTRIES CORPORATION (SABIC) OR ITS SUBSIDIARIES OR AFFILIATES ("SELLER") ARE SOLD SUBJECT TO SELLER'S STANDARD CONDITIONS OF SALE, WHICH ARE AVAILABLE UPON REQUEST. INFORMATION AND RECOMMENDATIONS CONTAINED IN THIS DOCUMENT ARE GIVEN IN GOOD FAITH. HOWEVER, SELLER MAKES NO EXPRESS OR IMPLIED REPRESENTATION, WARRANTY OR GUARANTEE (i) THAT ANY RESULTS DESCRIBED IN THIS DOCUMENT WILL BE OBTAINED UNDER END-USE CONDITIONS, OR (ii) AS TO THE EFFECTIVENESS OR SAFETY OF ANY DESIGN OR APPLICATION INCORPORATING SELLER'S MATERIALS, PRODUCTS, SERVICES OR RECOMMENDATIONS. UNLESS OTHERWISE PROVIDED IN SELLER'S STANDARD CONDITIONS OF SALE, SELLER SHALL NOT BE RESPONSIBLE FOR ANY LOSS RESULTING FROM ANY USE OF ITS MATERIALS, PRODUCTS, SERVICES OR RECOMMENDATIONS DESCRIBED IN THIS DOCUMENT. Each user is responsible for making its own determination as to the suitability of Seller's materials, products, services or recommendations for the user's particular use through appropriate end-use and other testing and analysis. Nothing in any document or oral statement shall be deemed to alter or waive any provision of Seller's Standard Conditions of Sale or this Disclaimer, unless it is specifically agreed to in a writing signed by Seller. Statements by Seller concerning a possible use of any material, product, service or design do not, are not intended to, and should not be construed to grant any license under any patent or other intellectual property right of Seller or as a recommendation for the use of any material, product, service or design in a manner that infringes any patent or other intellectual property right.

SABIC, including its depiction in the SABIC emblem, *Chemistry That Matters*, EXELL, LEXAN, LEXAPANEL, MARGARD, SUNXP, THERMOCLEAR, and THERMOPANEL, are trademarks of Saudi Basic Industries Corporation or its affiliates.

© 2015 Copyright SABIC. All rights reserved.

Dripgard is a trademark of Standard Bent Glass Corp.